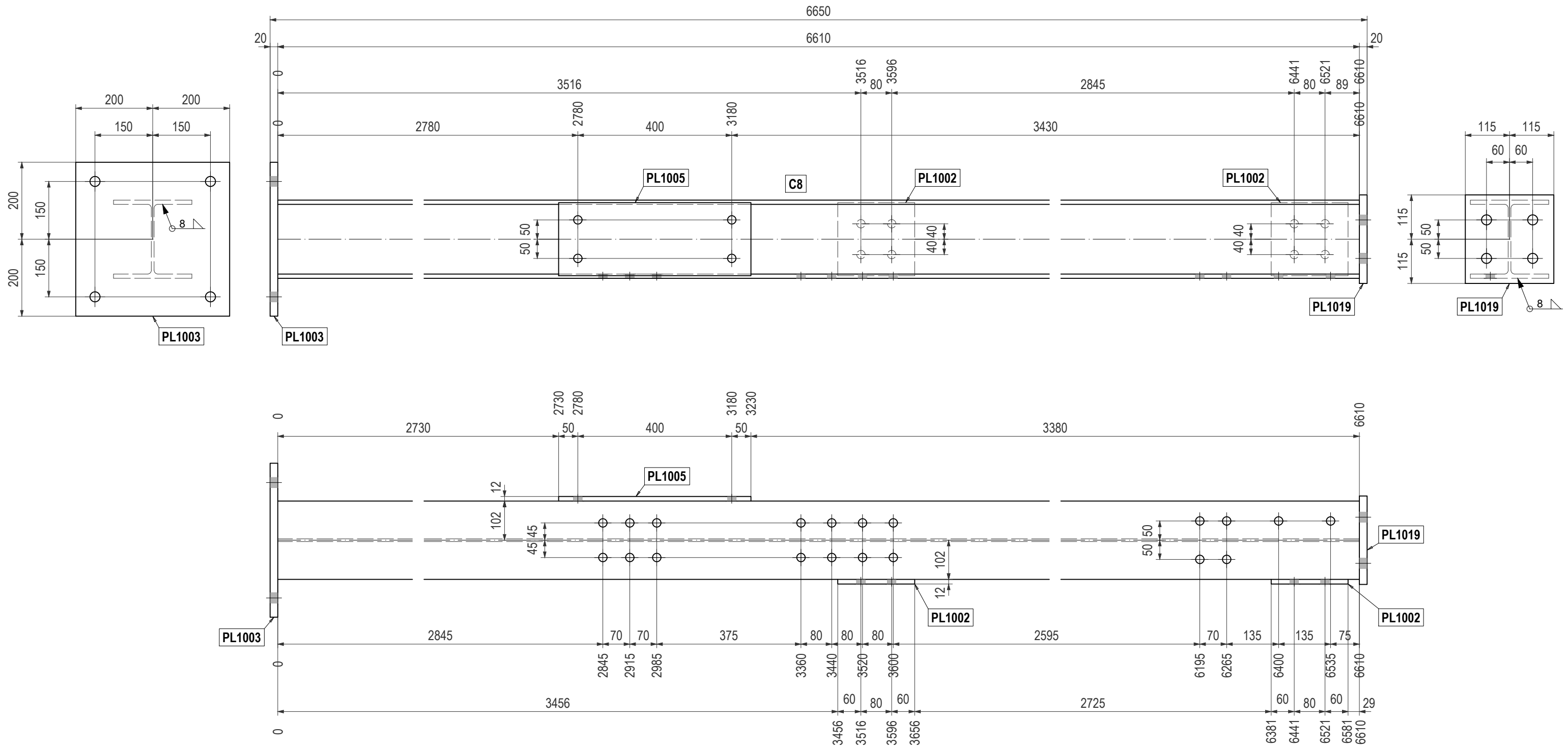


MARK	QUANTITY	DESCRIPTION	GRADE	LENGTH [mm]	WEIGHT [kg]	TOTAL WT. [kg]
C8	1					
C8	1	UC203x203x46	S355JR	6610	304.7	304.7
PL1002	2	PL12x190x200	S355JR	200	3.6	7.2
PL1003	1	PL20x400x400	S355JR	400	25.1	25.1
PL1005	1	PL12x190x500	S355JR	500	8.9	8.9
PL1019	1	PL20x230x230	S355JR	230	8.3	8.3
TOTAL WEIGHT FOR ONE ASSEMBLY [kg]:						354.3
TOTAL WEIGHT [kg]:						354.3

1 No. **C8** 1:10 - Zinc Phosphate Primer



GENERAL NOTES:

- ALL DIMENSIONS ARE IN MILLIMETERS U.N.O.
- ALL WELDS ARE 6mm CONTINUOUS FILLET U.N.O.
- REMOVE ALL BURRS AND SHARP EDGES
- ASSEMBLY MARK TO BE HARD STAMPED (OR SIMILAR) AND CLEARLY VISIBLE

A	01.08.2018	ISSUED FOR CONSTRUCTION	TIM
INDEX	DATE	DESCRIPTION	AUTHOR

