

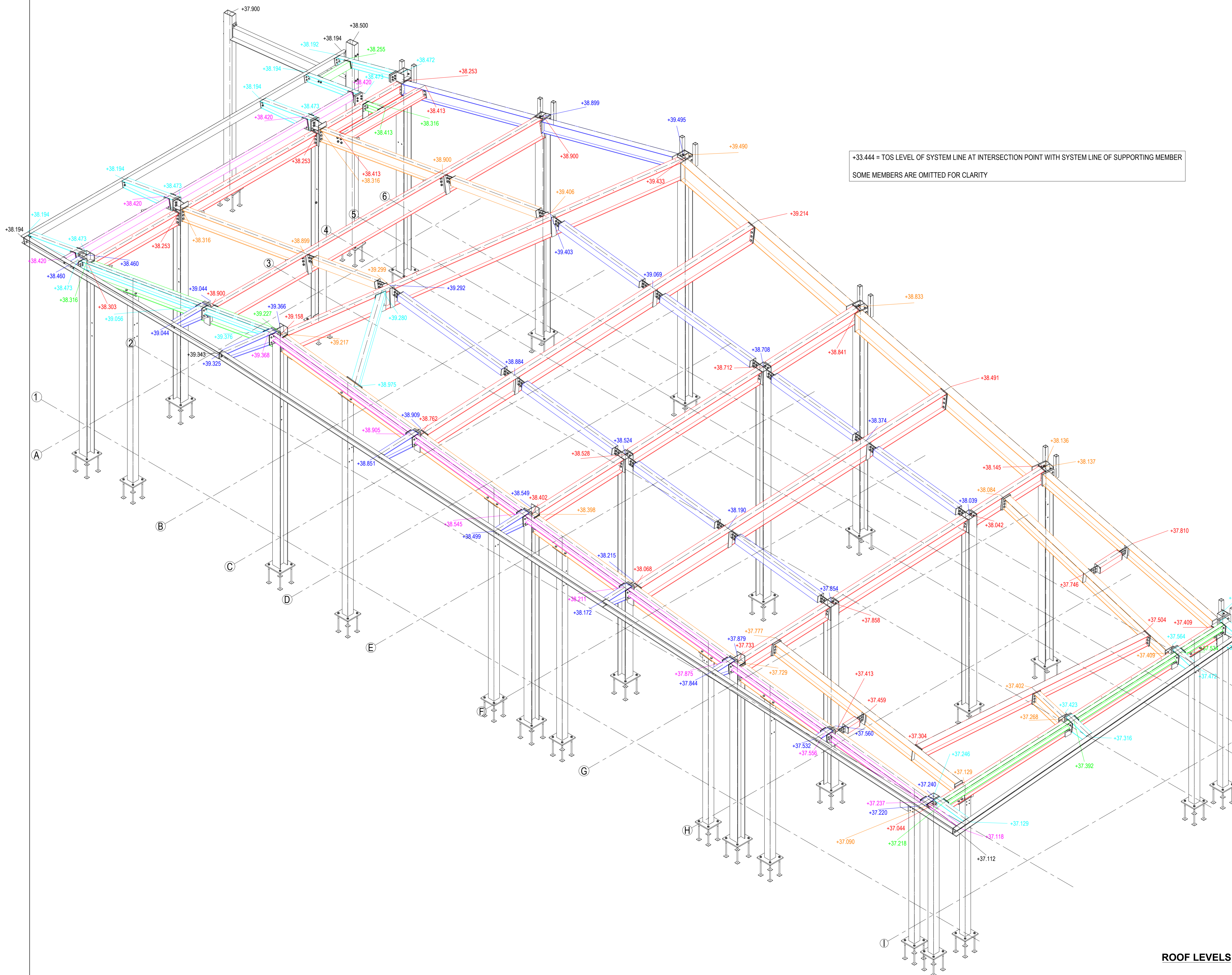
GENERAL NOTES:

1. DO NOT SCALE THIS DRAWING.
2. ALL DIMENSIONS ARE IN MILLIMETERS UNLESS NOTED OTHERWISE.
3. ALL WELDS ARE 6mm CONTINUOUS FILLET UNLESS NOTED OTHERWISE.
4. ALL LEDGER / PACKERS WELDS ARE 6mm 100 HIT AND 300 MISS.
5. ALL BOLTS ARE GRADE 8.8 UNLESS NOTED OTHERWISE.
6. ALL FOUNDATION BOLTS SUPPLY ONLY - INSTALLATION BY OTHERS.
7. DRILLING OR FIXING OF ANY MECHANICAL OR RESIN FIXINGS BY OTHERS.

STEEL GRADE:
- S355JR

STEEL FINISH:
INTERNAL STEELWORK:
- SHOP PREPARATION: STEEL PREPARED TO AT LEAST Sa2½
- SHOP PRIMER: ZINC PHOSPHATE EPOXY PRIMER, GREY, 175 MICRONS
EXTERNAL STEELWORK:
- SHOP PREPARATION: STEEL PREPARED TO AT LEAST Sa2½
- GALVANIZING: FULL HOT DIP GALVANIZED TO EN ISO 1461

+33.444 = TOS LEVEL OF SYSTEM LINE AT INTERSECTION POINT WITH SYSTEM LINE OF SUPPORTING MEMBER
SOME MEMBERS ARE OMITTED FOR CLARITY



ROOF LEVELS